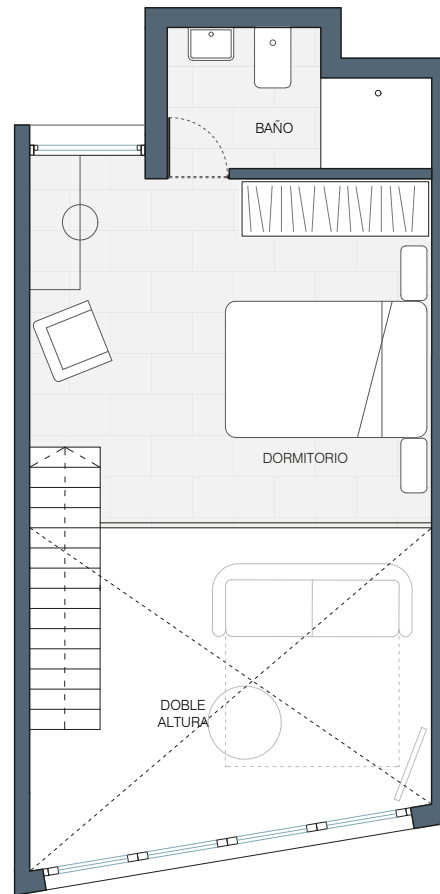
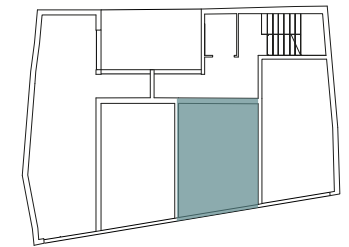


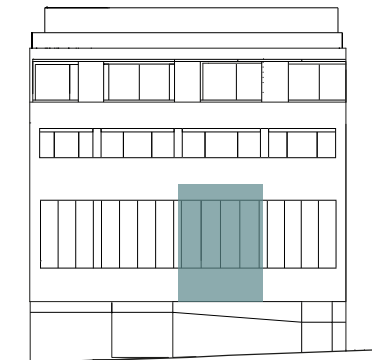
PLANTA PRIMERA



ENTREPLANTA



PLANTA PRIMERA



ALZADO

ESTANCIA	SUP. CONST.
Salón-comedor-cocina	25.15 m ²
Dormitorio	13.06 m ²
Baño	3.44 m ²

DÚPLEX 1B

1DOR SUP. 58.2m²

Apartamentos 4 Torres
C/ Cañaveral 105. Madrid
VIVIENDA 1B

GONZÁLEZ VIVES ARQUITECTURA
www.gonzalezvives.es
estudio@gonzalezvives.es
+34 91 542 10 46

