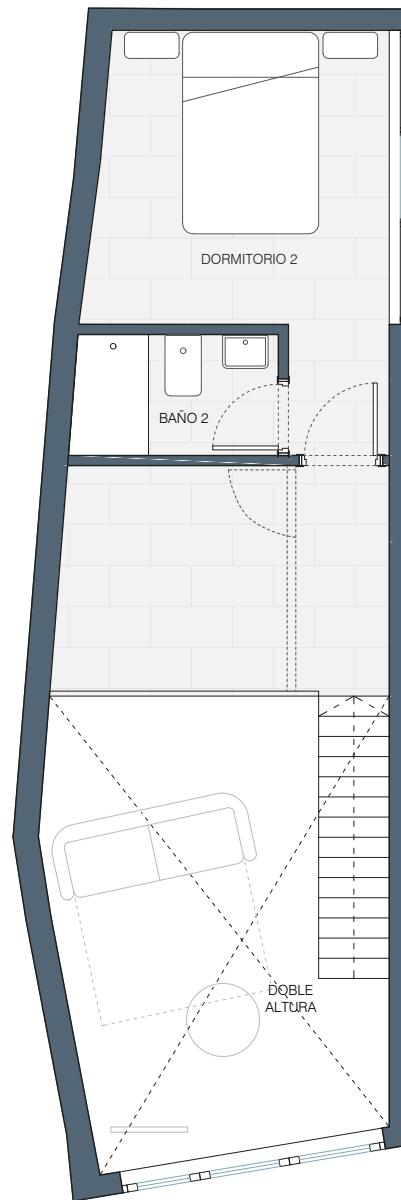
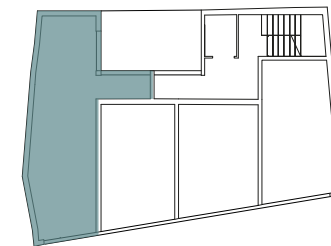


PLANTA PRIMERA



ENTREPLANTA



PLANTA PRIMERA



ALZADO

ESTANCIA	SUP. CONST.
Salón-comedor-cocina	30.96 m ²
Dormitorio 1	10.16 m ²
Baño 1	3.14 m ²
Dormitorio 2	11.65 m ²
Baño 2	3.14 m ²
Terraza	15.11 m ²

SUP. CONST. INT. 95.9m²

DÚPLEX 1D

2DOR SUP. 111.1m²

Apartamentos 4 Torres
C/ Cañaveral 105. Madrid
VIVIENDA 1D

GONZÁLEZ VIVES ARQUITECTURA
www.gonzalezvives.es
estudio@gonzalezvives.es
+34 91 542 10 46

