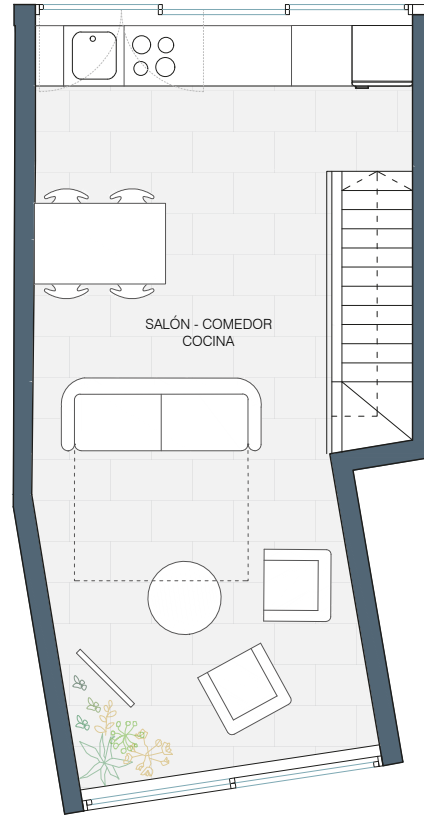
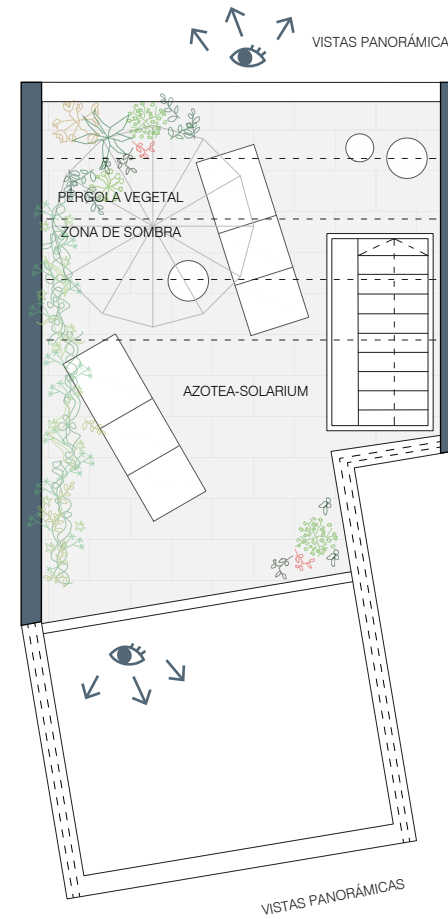


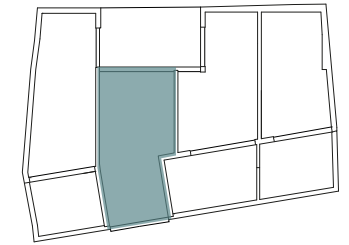
PLANTA SEGUNDA



PLANTA ÁTICO



PLANTA CUBIERTA



PLANTA ÁTICO



ALZADO

ESTANCIA	SUP. CONST.
Vestíbulo	6.98 m ²
Salón-comedor-cocina	26.83 m ²
Dormitorio	11.29 m ²
Baño	4.23 m ²
Azotea-solarium	29.78 m ²

SUP. CONS. INT. 75.1m²

DÚPLEX 2C

1DOR SUP. 104.9m²

Apartamentos 4 Torres
C/ Cañaveral 105. Madrid
VIVIENDA 2C

GONZÁLEZ VIVES ARQUITECTURA
www.gonzalezvives.es
estudio@gonzalezvives.es
+34 91 542 10 46

